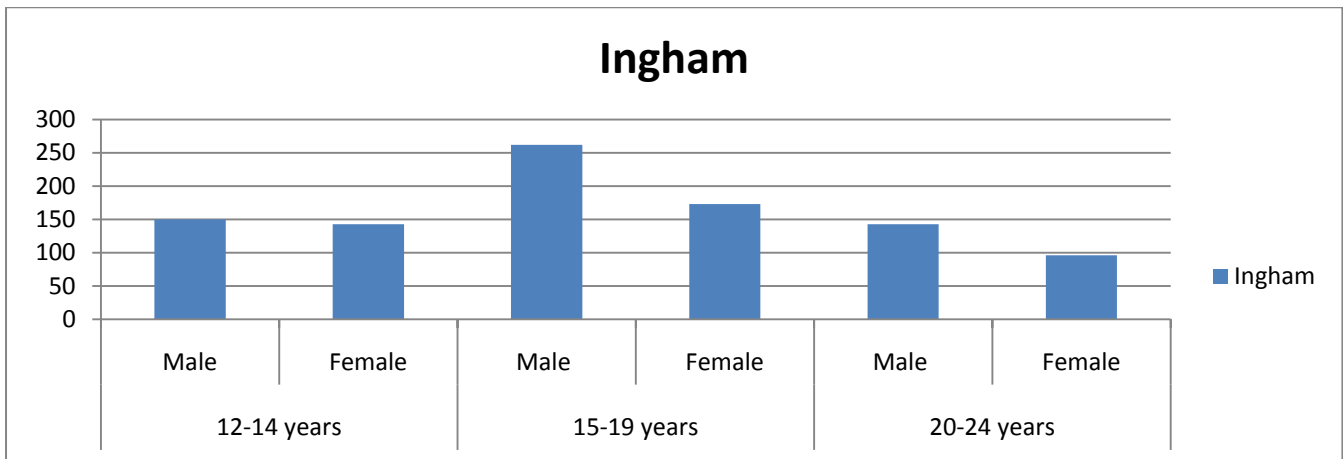


The following is a summary of key data from the Australian Bureau of Statistics 2010 Census. When viewing you will need to keep in mind, 2 years have passed since the collection of data. The data for Ingham includes, the surrounding area, out to Lucinda, South to Mutarnee, and West to Abergowrie.

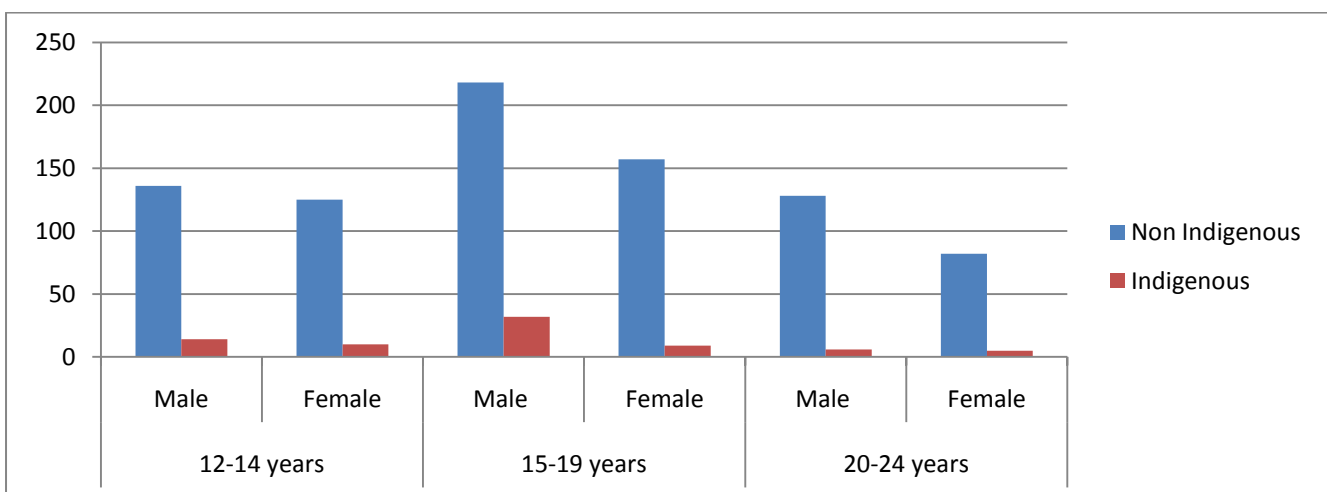
YOUTH POPULATION – 12 TO 24 YEARS



The gender distribution is 43% (412) female and 57% (555) male. This peaks in the 15 -19 year aged group where the gender difference is females 39% (173) and Males 61% (262).

Age distribution includes 30% (293) between the ages of 12 to 14 years; 45% (435) between the ages of 15 to 19 years; 25% (239) between the ages 20 to 24 years

The *Indigenous Australian proportion of the Ingham populations* is provided below.



The Indigenous Australian population attributes to 8% of Ingham Region Youth population. The gender distribution is 32% (24) female and 68% (52) male, which has a slightly higher male distribution than the overall gender split.

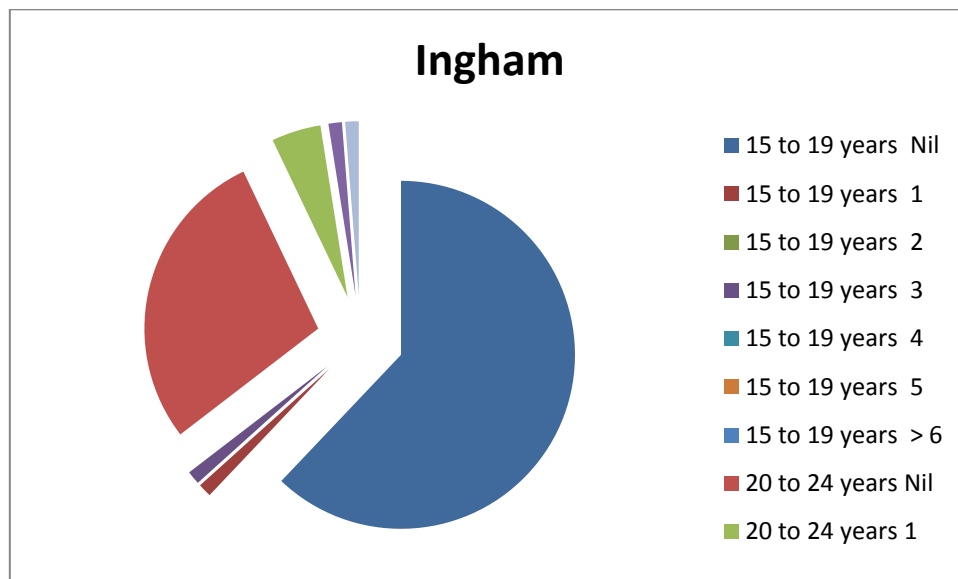
The peak in males also occurs in the 15-19 years age group. With 78% in this age group being male. Age distribution includes 32% (24) between the ages of 12 to 14 years, representing 5% of Ingham Region 12 to 14 year olds. 54% (41) between the aged of 15 to 19 representing 9% Ingham’s 15 to 19 year olds, and 14% (11) between the age of 20 to 24 years, representing 5% of Ingham’s 20 to 24 year olds.

A large percentage of Indigenous Youth in the Ingham Region are between the ages of 15 to 19. In 2012 this means that they are now 17 to 21 and looking for work.

274 persons, or 4% of the population did not choose or state their Indigenous status.

YOUTH AS PARENTS – NUMBER OF CHILDREN BORN BY AGE OF PARENT

The young parent’s data is based on the count of females from 15 years and over. In the 15 to 24 years aged distribution 28 people have not stated their status regarding birth of children.

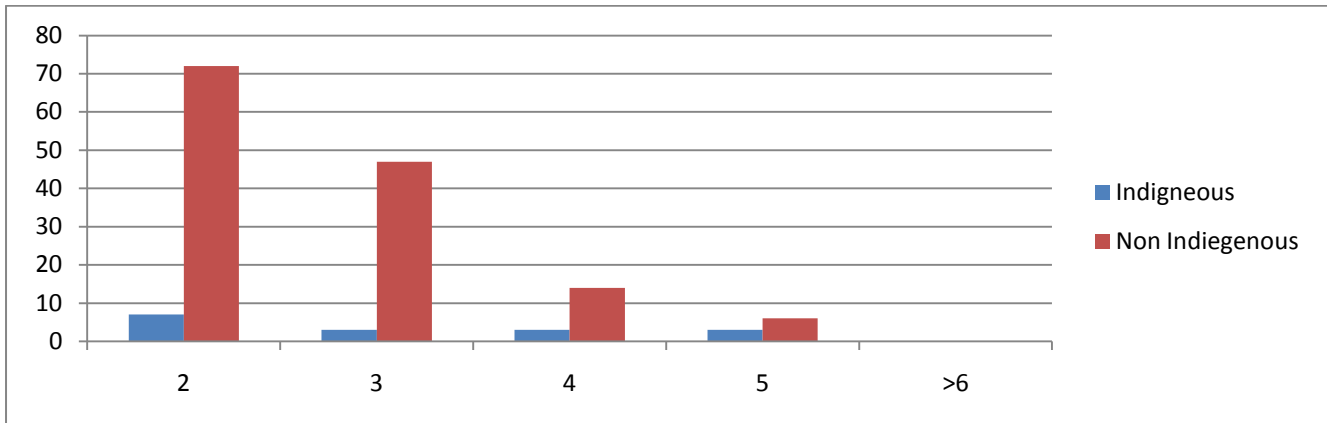


There is a total of 6 youth between the ages of 15 to 19 years residing in the Ingham Region who have given birth to one – three children. This increases to 14 between the ages of 20 to 24 years. 3 Youth between the ages of 20 to 24 have 5 children. A total of 23 females between the ages of 15 to 24 have children representing 6% of females in this age group.

Data for number of children born by age of parents was not presented for Indigenous Australians, therefore no analysis of Indigenous Australians as young parents is provided.

One – Parent Households

The composition of a household and the number of persons residing in the household can also greatly impact on Youth. The representation of one parent families in Ingham Region is 6%. Of the 2590 households 145 have a family composition of **one parent**.



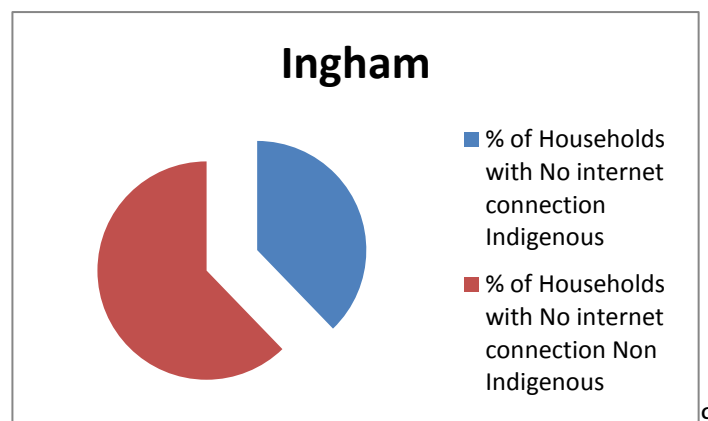
The data for “Household composition and family by number of persons” does not describe the age of all people residing in the household. Therefore the analysis does not provide the detail of whether all other persons residing in the household are dependents of the “One Parent”, or whether there are other adults residing in the house who are not in a relationship or dependant on the sole parent.

From the data provided the analysis does determine that 20% (16) of Indigenous households in Ingham Region are a one parent family, compared to 6% (139) of Non-Indigenous households. **Indigenous households in Ingham Region are three times more likely to have one parent.**

Although the Indigenous population is 8% of Ingham’s population, the Indigenous households only represents 3% of the total households. 21% of Indigenous households have five or more people in them compared to 2% of non-Indigenous households.

INTERNET ACCESS

The technological divide can impact on Youth in many ways, with the most prominent influence being the education and training sector which have a high reliance on the internet. Youth without access are greatly disadvantage when it comes to research, completion of assignments, and access to on-line courses. Families are also disadvantaged by not being able to access on-line shopping or on-line forms from government and non-government services. There are a total of 28% (723) households in the Ingham Region without internet access. Of these only 2% are Indigenous households. Of The 78 Indigenous households 17% don’t have internet access compared to 28% of non-Indigenous households.



YOUTH EDUCATION

Attending Secondary Education

Youth between the age of 13-17 attending secondary education

	Males	Females
Aged between 13-17	289	216
Enrolled in Secondary	260	207
Variance	29	9

There are 38 Youth between the ages of 13 to 17 who were not enrolled in secondary education. This represents 7% of this age groups population. With only 3 fulltime TAFE enrolments between the ages of 15-24 the probability that this age group has continued their studies is unlikely.

Highest level of School

The data is taken for those between the age of 20 – 24 years. The previous cluster of 15-19 was not considered as many would still be enrolled in schools and not completed their education.

20-24 years of age – Highest year of school

	Year 8	Year 10	Year 12
Males	3	19	89
Females	3	9	67

The male population in Ingham is higher than females by 49 in this age group. So whilst the raw number of completions is higher, as a percentage of the gender population it is lower. 61% of the males completed year 12 compared to 70% of the females. As a rural location, male students may have opted for trade or agriculture work after completing year 10. Some may have dropped out of education and training altogether.